



# WEKO-SEAL®

## PRODUCT DESCRIPTION

### Internal Joint Repair Seals

The Weko-Seal joint seal offers a permanent, cost-efficient leak and infiltration sealing system for water, wastewater, storm water and gas pipelines. This flexible, non-corrosive rubber seal is hydraulically clamped around the full interior circumference of the host pipe to create a bottle-tight seal, still allowing limited joint flexibility.

#### Applications:

Sewer, Water, Storm and other product pipeline joints.

#### Standards:

NSF Approved

Size: 18" to 216"



## CARBON FIBER STRUCTURAL REHABILITATION

Carbon Fiber Structural Rehabilitation is a flexible, minimally invasive restoration and rebuilding product that can be used to strengthen and repair sanitary sewer structures, pipelines, and other civil infrastructure. Applications include both internal and external uses.

The system consists of carbon or glass fibers, mixed with an epoxy resin system which uniformly transfers the load across the fibers, and is capable of high bond strengths and tensile strengths up to over 325,000 lbs. Typical applications include structural upgrades and corrosion repairs of both concrete and steel pipes, tunnels, storm drains, and tanks.

Carbon Fiber Structural Rehabilitation is an excellent way to increase strength, while using less material and losing less cross sectional area. This product's custom fit applications give us the ability to negotiate bends and various pipe sizes based on each unique project. This results in a very cost effective yet reliable alternative to excavation and costly repairs. This product is approved by both Caltrans as well as the EPA for potable water environments.

BEFORE



AFTER





# T-LINER®

## PRODUCT DESCRIPTION

Cured-in-Place CIPP Service Lateral Connection (SLC) and Lateral Lining System

Cured-in-place liner is installed by placing a resin impregnated felt tube through the sewer main to the lateral connection and then inverted through the lateral to a clean out. The liner is then cured with steam or hot water.

The finished product produces an integral 360 degree liner in the main at the connection point continuing up the lateral.

**Applications:** Can line sewer laterals up to 160' from the main in a single continuous run and is able to negotiate multiple bends.

**Standards:** Conforms to "Greenbook" section 500-1.4 ASTM standards F2561-06, F1216, and D5813

**Size:** 6" to 24"



# SANCON CIPP

## PRODUCT DESCRIPTION

Full Length and Sectional Main Line Structural Pipe Rehabilitation

Installation of the cured-in-place liner is performed by either inversion with water, air, or winched in place and cured with steam or hot water. During the cure process the tube is held tightly against the host pipe by either water or steam pressure. Lateral connections leave dimples that are reopened by the use of robotic cutters.

**Applications:** Sewer, water, storm and other product pipelines up to over 1,000 feet in length can be rehabilitated using this method. Sectional liners are also available in lengths 3' to 50' in length anywhere within a longer run. Liners can be made to accommodate a variety of design considerations including the ability to negotiate bends and transitions in pipe diameter.

**Standards:** Full length "Greenbook" section 500-1.4 ASTM standards F1216, F1743 & D5813

**Sectional Liners:** ASTM 2599-06

**Size:** 4" to 48"





# AM-LINER II®

## PRODUCT DESCRIPTION

Folded and reformed PVC pipe liner, AM-LINER II is a factory manufactured solid wall PVC pipe lining system designed to replace degrading pipelines in a totally trenchless manner. Folded and reformed AM-LINER II is winched from manhole to manhole and then rounded by adding heat and low pressure to form a tight fitting pipe within a pipe. AM-LINER II can line over offsets, voids, inactive laterals, through curves, and manholes. Laterals are reinstated by remote controlled cutters. The resulting process leaves a seamless and non-corrosive pipeline.

**Applications:** Non-pressure sewer, water, and storm pipelines.  
Available in SDR 32.5 and 26

**Standards:** Conforms to "Greenbook" Section 500-1.10 & ASTM F1867 & F1871

**Size:** 6" to 12"



AM-LINER II®  
REGISTERED



# LINK-PIPE®

## PRODUCT DESCRIPTION

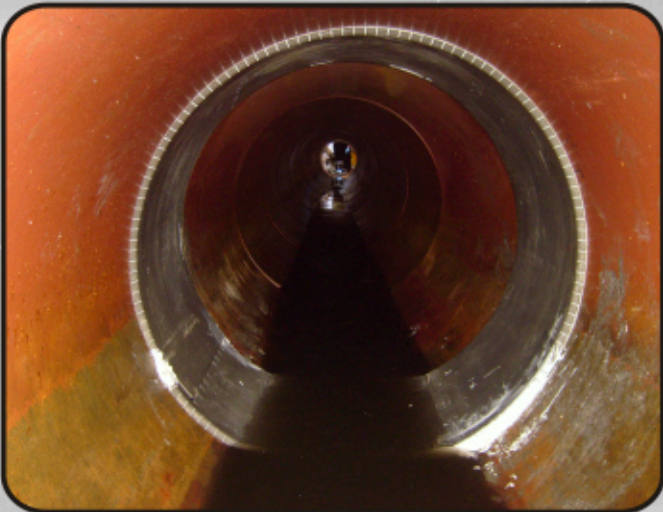
Internal pipe joint repair system which can sequentially be linked to provide a repair over several feet.

Link-Pipe is a pipeline repair system designed to add sealing and structural strength to the pipe. Stainless steel or PVC internal sleeves with rubber seals are remotely or man-entry installed. The end result is a permanent repair with minimum obstruction within the pipe and a 100 year design life including a 10 year warranty.

**Applications:** Pressure and non-pressure sewer, water, and storm pipelines.

**Standards:** WRC Approval, ISO 9001-2000, ASTM A167 & A240

**Size:** 6" to 108"



 **LINK-PIPE®**  
Manufacturer of No-Dig Pipe Repair Products



# AMERON ARROW-LOCK®

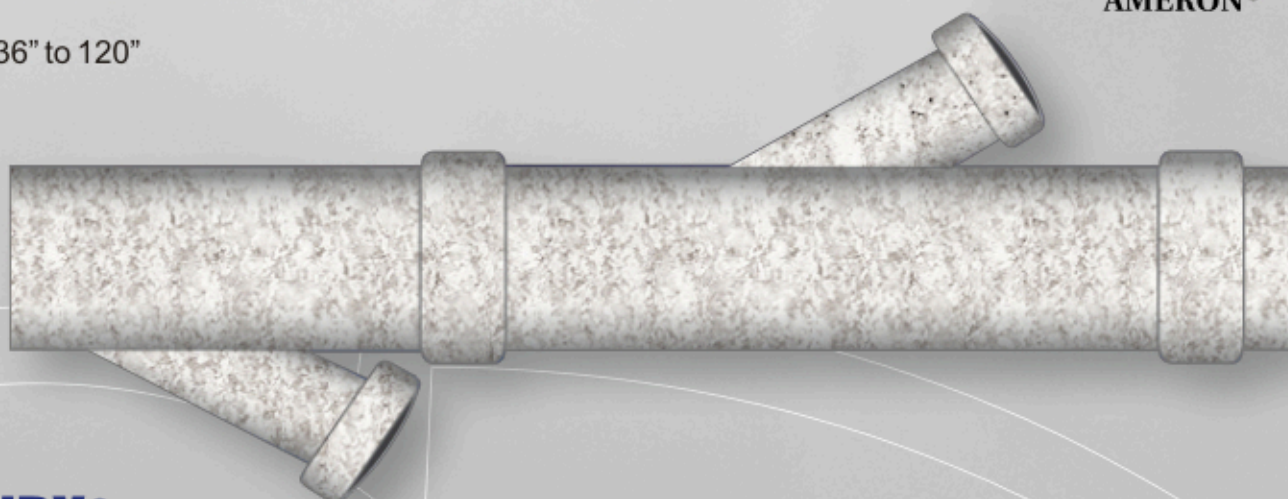
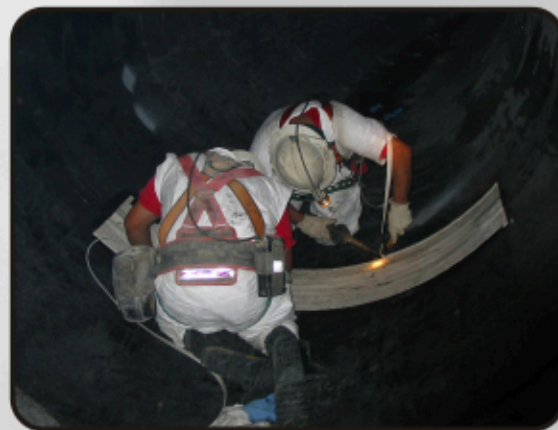
## PRODUCT DESCRIPTION

Arrow-lock is designed to install new PVC lining in existing structures or pipes and has been used extensively to repair existing PVC T-LOCK liners. After surfaces are cleaned and smoothed with mortar if necessary, high build 100% solids epoxy mastic is applied to the surfaces and followed with specially designed PVC. Seams are then heat welded to form a bonded lining system.

**Applications:** Repair of existing PVC lined concrete structures or pipes. Installation of new PVC liner in man-entry sized concrete pipe and concrete sanitary sewer structures including manholes, wet wells, sedimentation tanks, headworks, and digesters.

**Standards:** Conforms to "Greenbook" Section 500-2.5

**Size:** 36" to 120"



# DANBY®

## PRODUCT DESCRIPTION

Danby large diameter pipe renovation system is a layered composite of a ribbed profile PVC Liner, high strength cementitious grout, and the original pipe. The system uses a ribbed profile strip of semi-rigid PVC which locks together forming a gas and watertight pipe form inside the host pipe. The space between the PVC liner and the deteriorated host pipe is then grouted solid with a high strength and fluid grout. This results in a minimum loss of diameter, improved hydraulic capacity, an effective barrier to hydrogen sulfide corrosion, and greater flexibility in structural repair.

**Applications:** Pressure and non-pressure sewer, water, and storm pipelines including non-circular shapes. The lining system can also accommodate angle points and changes in pipe size.

**Standards:** Conforms to "Greenbook" Section 500-1.5 & ASTM F1698 & F1735

**Size:** 36" to 120"



**E**stablished in 1980, Sancon Engineering Inc. specializes in the rehabilitation of sanitary sewer pipelines, structures and industrial related infrastructure. Our expertise in this specialized field enables us to provide effective project management using trained and experienced staff capable of carrying out investigation and supervisory functions, while our crews come prepared to install our products with specialized equipment.

Sancon's expertise includes manufacturing and installing its own manhole / structure rehabilitation products and installing proven pipelining systems. The design and manufacture of our own products allows our company total quality control and absolute responsibility over our work.

Manufacturers' of their own manhole and structure products, Sancon employs over 40 including Engineers, Contract Administrators, Project Managers and Field Crew.

For over 30 years, Sancon Engineering has rehabilitated sewer structures using polyurethane coatings and specialized pipe lining systems. We have successfully conducted work for over 100 public agencies throughout California, Nevada, and Arizona. Our corporate offices and manufacturing plant are located in Huntington Beach, California.

Please take a moment to review our services and products that might enable us to assist your agency in an upcoming project. We welcome your business!



5841 Engineer Dr. Huntington Beach CA 92649 USA  
Toll Free: 800.726.2664 Ph: 714.891.2323 Fax: 714.891.2524

[www.sancon.com](http://www.sancon.com)

